

**BASIC DETAILS**

25561--SHOKEEN INTERNATIONAL SCHOOL

Dated : 10/05/2023

<b>SCHOOL NAME</b>	SHOKEEN INTERNATIONAL SCHOOL	<b>SCHOOL CODE</b>	255
<b>ADDRESS</b>	CHHAWLA- DWARKA ROAD, DWARKA PHASE-2,,CHHAWLA- DWARKA ROAD, DWARKA PHASE-2,,CHHAWLA- DWARKA ROAD, DWARKA PHASE-2,	<b>AFFILIATION CODE</b>	273
<b>PRINCIPAL</b>	MRS KUSUM RATHORE	<b>PRINCIPAL'S CONTACT NUMBER</b>	931
<b>PRINCIPAL'S EMAIL ID</b>	rathore.kusum@gmail.com	<b>PRINCIPAL'S RETIREMENT DATE</b>	01/1
<b>SCHOOL'S CONTACT NUMBER</b>	011-01124524404	<b>SCHOOL'S EMAIL ID</b>	sho
<b>SCHOOL'S WEBSITE</b>	<a href="https://www.shokeeninternationalschool.com">https://www.shokeeninternationalschool.com</a>	<b>SCHOOL'S FAX NUMBER</b>	011
<b>LANDMARK NEAR SCHOOL</b>	Nirmal Dham	<b>YEAR OF ESTABLISHMENT</b>	200
<b>AFFILIATION VALIDITY</b>	2022 TO 2027	<b>AFFILIATION STATUS</b>	PRC
<b>NAME OF THE TRUST/SOCIETY/COMPANY REGISTERED WITH</b>	NAVEEN QUBOOL SINGH EDUCATIONAL AND SOCIAL WELFARE SOCIETY	<b>REGISTRATION DATE</b>	27/1
<b>SOCIETY REGISTRATION NUMBER</b>	56750	<b>REGISTRATION VALIDITY</b>	PER
<b>NOC ISSUING AUTHORITY</b>	DDE SWB	<b>NOC ISSUING DATE</b>	23/.
<b>NO OBJECTION CERTIFICATE</b>	<b>VIEW (ViewPdfFiles.aspx?FileName=sQ6GkjrR5iPNczilJ1hgnJTKXLgXtgiHq4O25yjMEyE=)</b>	<b>NON PROPRIETARY CHARACTER AFFIDAVIT/NON PROFIT COMPANY AFFIDAVIT</b>	<b>VIE' File</b>
<b>WHETHER SCHOOL IS RUNNING MORNING/ EVENING/ DOUBLE SHIFT?</b>	Morning	<b>CURRENTLY RUNNING CLASSES FROM</b>	<b>BAL</b>
<b>WHETHER OFFERED VOCATIONAL/SKILL SUBJECTS?</b>	Yes	<b>CLASSES WHERE SKILL SUBJECTS ARE OFFERED</b>	

**FACULTY DETAILS**

25561--SHOKEEN INTERNATIONAL SCHOOL

Dated :

<b>TOTAL NUMBER OF TEACHERS (ALL CLASSES)</b>	10	<b>NUMBER OF PGTs</b>	0
<b>NUMBER OF TGTs</b>	5	<b>NUMBER OF PRTs</b>	5
<b>NUMBER OF PETs</b>	0	<b>OTHER NON-TEACHING STAFF</b>	3
<b>NUMBER OF MANDATORY TRAINING QUALIFIED TEACHERS</b>		<b>NUMBER OF TRAININGS ATTENDED BY FACULTY SINCE LAST YEAR</b>	
<b>WHETHER SPECIAL EDUCATOR APPOINTED?</b>	Yes	<b>WHETHER COUNSELLOR AND WELLNESS TEACHER APPOINTED?</b>	Yes
<b>HAS MANDATORY TRAINING OF TEACHERS AS PER THE TRAINING POLICY (SECTION-16 OF AFFILIATION BYE-LAWS) (<a href="http://cbseaff.nic.in/cbse_aff/attachment/onlineservices/affiliation-Bye-Laws.pdf">http://cbseaff.nic.in/cbse_aff/attachment/onlineservices/affiliation-Bye-Laws.pdf</a>) BEEN COMPLETED?</b>		<b>NUMBER OF NTTs</b>	0



**STUDENT DETAILS**

25561--SHOKEEN INTERNATIONAL SCHOOL

Dated : 10/05/2023

CLASS	TOTAL NUMBER OF SECTIONS (FOR RUNNING CLASSES)	MAXIMUM PER CLASS INTAKE	TOTAL NUMBER OF GIRLS	TOTAL NUMBER OF BOYS	TOTAL NUMBER OF TRANS-GENDER	TOTAL NUMBER OF STUDENTS	TOTAL NUMBER OF CWSN (BOYS,GIRLS & TRANS-GENDERS)
Bal Vatika 1(Pre-School)	0	0	0	0	0	0	0
Bal Vatika 2(Pre-School)	1	30	5	7	0	12	0
Bal Vatika 3(Pre-School)	1	30	7	12	0	19	0
1	1	30	5	6	0	11	0
2	1	30	5	6	0	11	0
3	1	30	5	12	0	17	0
4	1	30	4	6	0	10	0
5	1	30	11	9	0	20	0
6	1	30	7	7	0	14	0
7	1	30	8	11	0	19	0
8	1	30	6	2	0	8	0
9	2	30	12	35	0	47	0
10	0	0	0	0	0	0	0
11	0	0	0	0	0	0	0
12	0	0	0	0	0	0	0

**ACADEMIC DETAILS**

25561--SHOKEEN INTERNATIONAL SCHOOL

Dated : 10/05/2023

SKILL SUBJECTS OFFERED FOR CLASS 6 to 8	SUBJECTS OFFERED FOR CLASS 10	SUBJECTS OFFERED FOR CLASS 12
	002---HINDI COURSE-A 041---MATHEMATICS STANDARD 086---SCIENCE - THEORY 087---SOCIAL SCIENCE 122---SANSKRIT 165---COMPUTER APPLICATIONS 184---ENGLISH LNG & LIT. 241---MATHEMATICS BASIC 408---AGRICULTURE 415---MULTI-MEDIA 417---ARTIFICIAL INTELLIGENCE	

**INFRASTRUCTURE DETAILS**

25561--SHOKEEN INTERNATIONAL SCHOOL

Dated : 07/07/2022

TOTAL NUMBER OF SITES OF SCHOOL	1	TOT OF I BLO
NUMBER OF STOREIES IN THE BUILDING		TOT SCH SQL
TOTAL NUMBER OF PLAYGROUNDS	2	TOT PLA SQL
TOTAL CLASSROOMS	25	TOT OF : ROC
TOTAL NUMBER OF MEDIUM-SIZED ROOMS	22	TOT OF I ROC
DOES THE SCHOOL HAVE A BOUNDARY WALL?	YES	TOII FEM
TOILETS FOR MALE STAFF	1	INCI AVA GIR
AVAILABILITY OF SANITARY PAD VENDING MACHINE		TOT OF I
NUMBER OF LABORATORIES	3	TOT OF : CAN
TOTAL NUMBER OF STAFF CANTEENS	0	NUI WAI PUF
NUMBER OF AUDITORIUMS	0	NUI LIFT
NUMBER OF DIGITAL CLASSROOMS	2	DOE SCH HO:



DOES THE SCHOOL HAVE GUARDS EMPLOYED FOR SAFETY	YES	DOE SCH FIRI EXT
DOES THE SCHOOL HAVE SPRINKLERS	YES	DOE SCH CCT INS
IS THE SCHOOL EXAMINATION CENTER OF CBSE?	NO	TOT OF I IN A COM
DOES THE SCHOOL HAVE WEB SERVERS	NO	DOE SCH CLII
DOES THE SCHOOL HAVE A STRONG ROOM/ ROOM FOR STORING CONFIDENTIAL MATERIALS?	YES	DOE SCH GYM
IS YOUR SCHOOL WI-FI ENABLED?	YES	PRC WEI LEA PRC
DOES THE SCHOOL HAVE FIRE ALARMS?	YES	DOE SCH SPC FAC
DOES THE SCHOOL HAVE INDOOR GAMES FACILITY?	YES	DOE SCH SWI POC
DOES THE SCHOOL HAVE DANCE/MUSIC FACILITY?	YES	TOT OF I OWI
TOTAL NUMBER OF BUSES HIRED	1	TOT OF VAN

LIBRARY  
RESOURCES

5

TOTAL NUMBER OF DRIVERS	2	NUM FEM ATT BUS
NUMBER OF ACTIVITY ROOMS	2	NAM TRA COC
TRANSPORT COORDINATOR CONTACT	9810316399	BUI SAF CER
TRANSPORT SAFETY CERTIFICATE	VIEW (ViewPdfFiles.aspx? FileName=gvLodyEtmr+I/BIHx7Tn7q70Z/NafMJdlABG6VyYaqS/NRrzeRHZRoumXR7km+Q6)	ARE ANI TOII FLO SEP TOII STA SIGI ETC MAI PRC
IS THE SCHOOL INFRASTRUCTURE BEING USED FOR ANY COMMERCIAL ACTIVITY?	NO	

### OTHER DETAILS

TOTAL BOOKS AVAILABLE IN THE SCHOOL LIBRARY	2869	PER BOC SCH
DAILIES IN THE SCHOOL LIBRARY	4	REF BOC SCH
FICTION BOOKS IN THE SCHOOL LIBRARY		STO THE LIBI
OTHER BOOKS IN THE SCHOOL LIBRARY		GEN IN T LIBI
LIBRARY RESOURCES	5	DOE LIBI SOF

RAMP  
ACCE:  
UPPE

Ot

<b>LIBRARY SIZE (IN SQ. METERS)</b>	58	<b>COM SIZI MET</b>
<b>COMPOSITE SCIENCE LAB SIZE (IN SQ. METERS)</b>	58	<b>CHE SIZI MET</b>
<b>PHYSICS LAB SIZE (IN SQ. METERS)</b>	40	<b>HOV ROK 400 500</b>
<b>DOES IT HAVE LIBRARY INTERNET</b>	NO	<b>TOT OF I</b>
<b>WHETHER SCHOOL HAS SINGLE CONTIGUOUS PLOT ?</b>	Yes	<b>SCH (TEI PER</b>
<b>DISTANCE BETWEEN TWO SITES OF THE SCHOOL</b>	0	<b>PUR TWO THE</b>
<b>BIOLOGY LAB SIZE (IN SQ. METERS)</b>	40	<b>MAT LAB MET</b>
<b>CERTIFYING THAT NO OTHER INSTITUTION (APART FROM SCHOOL) IS RUNNING IN THE CLAIMED LAND AREA</b>	Yes	<b>THE WIL ANY THE PLO AFF</b>
<b>HOW MANY ROOMS LESS THAN 400 SQ FT</b>	0	<b>HOV ROK THA TO!</b>
<b>DOES THE SCHOOL HAVE RAMPS FOR PHYSICALLY HANDICAPPED?</b>	YES	<b>RAN ENT THE BUI</b>



RAMPS/LIFTS FOR  
ACCESSING  
UPPER FLOORS

VIEW (ViewImages.aspx?ImageID=Rw9WC4RkKrSb2Gf4efuSog==)

RAM  
AVA  
TOI  
CW:  
UNE  
FLO

### Other Infrastructure Details

S.No.	Description	Minimum Size(as per SOP)	No. of Units Available
1	ClassRoom (For running Classes)	Greater than equal to 500 sq ft (46.45 sqm)	
2	Other Rooms	Greater than 500 sq ft (46.45 sqm)	
3	Other Rooms	Less than 500 sq ft (46.45 sqm)	
4	Composite Science Lab	Greater than equal to 600 sq ft (55.74 sqm)	
5	Mathematics Lab	Greater than equal to 500 sq ft (46.45 sqm)	
6	Physics Lab	Greater than equal to 600 sq ft (55.74 sqm)	
7	Chemistry Lab	Greater than equal to 600 sq ft (55.74 sqm)	
8	Biology Lab	Greater than equal to 600 sq ft (55.74 sqm)	
9	Computer Lab	Greater than equal to 600 sq ft (55.74 sqm)	
10	Library	Greater than equal to 1200 sq ft (111.48 sqm)	
11	Music Room	Greater than equal to 500 sq ft (46.45 sqm)	
12	Dance Room	Greater than equal to 500 sq ft (46.45 sqm)	
13	Special Educator Room	Greater than equal to 500 sq ft (46.45 sqm)	
14	Strong Rooms		
15	Girl's Toilet		
16	Boy's Toilet		

RAMPS/LIFTS FOR  
ACCESSING  
UPPER FLOORS

VIEW (ViewImages.aspx?ImageID=Rw9WC4RkKrSb2Gf4efuSog==)

RAM  
AVA  
TOILET  
CW!  
UNE  
FLO

### Other Infrastructure Details

S.No.	Description	Minimum Size(as per SOP)	No. of Units Available
1	ClassRoom (For running Classes)	Greater than equal to 500 sq ft (46.45 sqm)	
2	Other Rooms	Greater than 500 sq ft (46.45 sqm)	
3	Other Rooms	Less than 500 sq ft (46.45 sqm)	
4	Composite Science Lab	Greater than equal to 600 sq ft (55.74 sqm)	
5	Mathematics Lab	Greater than equal to 500 sq ft (46.45 sqm)	
6	Physics Lab	Greater than equal to 600 sq ft (55.74 sqm)	
7	Chemistry Lab	Greater than equal to 600 sq ft (55.74 sqm)	
8	Biology Lab	Greater than equal to 600 sq ft (55.74 sqm)	
9	Computer Lab	Greater than equal to 600 sq ft (55.74 sqm)	
10	Library	Greater than equal to 1200 sq ft (111.48 sqm)	
11	Music Room	Greater than equal to 500 sq ft (46.45 sqm)	
12	Dance Room	Greater than equal to 500 sq ft (46.45 sqm)	
13	Special Educator Room	Greater than equal to 500 sq ft (46.45 sqm)	
14	Strong Rooms		
15	Girl's Toilet		
16	Boy's Toilet		



17	Toilet for CWSN(For Boys)		
18	Toilet for CWSN(For Girls)		
19	Girls Urinal with partition		
20	Boys Urinal with partition		

### Digital Infrastructure Details

S.No.	Description	Minimum Requirement	No. of Units Available
1	Computers (Desktop/Laptop) with Internet Connectivity	01 Computer System per 18 students interconnected with a single LAN network with audio- video input & ouput (Webcam/Speakers etc). Minimum 40 computer Systems	
2	Server (to be used as server for Assessment/Examination purposes)	At least one Computer System with high configuration	
3	Data backup device-either Cloud base or Physical (external HDD) for all kinds of data storage	Mandatory	
4	Internet Connectivity (Lease Line/Wi-Fi) with high speed	Mandatory	
5	Printers/Sacnners	At Least 2 Printers/2 Scanners	
6	UPS-To support all computer systems in lab for providing power backup to ensure uninterupted power supply	Mandatory	
7	Licensed Softwrae including Anti-Virus and other Security systems for Digital Infrastructure	Mandatory	
8	Digital Smart Boards	Mandatory	



**LOCATION DETAILS**

23361--SHOKEEN INTERNATIONAL SCHOOL

Dated : 10/05/2023

<b>NEAREST NATIONALISED BANK</b>	CANARA BANK	<b>DISTANCE OF BANK FROM SCHOOL IN KM</b>	01
<b>NEAREST BUS STATION</b>	CHHAWLA BUS STAND	<b>DISTANCE OF BUS TERMINAL FROM SCHOOL IN KM</b>	2
<b>NEAREST RAILWAY STATION</b>	BIJWASAN	<b>DISTANCE OF RAILWAY STATION FROM SCHOOL IN KM</b>	5
<b>NEAREST AIRPORT</b>	INDIRA GANDHI INTERNATIONAL AIRPORT	<b>DISTANCE OF AIRPORT FROM SCHOOL IN KM</b>	4
<b>NEAREST HOSPITAL</b>	INDIRA GANDHI HOSPITAL SEC-9	<b>DISTANCE OF HOSPITAL FROM SCHOOL IN KM</b>	3
<b>NEAREST POLICE STATION</b>	CHHAWLA POLICE STATION	<b>DISTANCE OF POLICE STATION FROM SCHOOL IN KM</b>	1
<b>NEAREST METRO STATION</b>	DWARKA SEC-9	<b>DISTANCE OF METRO FROM SCHOOL IN KM</b>	3

# CONTRIBUTION TOWARDS ENVIRONMENT PROTECTION

25561-SHOKEEN INTERNATIONAL SCHOOL

Dated : 10/05/2023

WHETHER RAIN WATER HARVESTING HAS BEEN DONE IN THE CAMPUS?	YES	WHETHER ROOF WATER HARVESTING IS BEING UNDERTAKEN BY THE SCHOOL?	YES
WHETHER HARVESTED WATER IS RECYCLED FOR GARDENING, ETC?	YES	WHETHER SCHOOL ENSURES MAINTENANCE OF ALL WATER FAUCETS/PIPES ETC TO PREVENT ANY LEAKAGES?	YES
WHETHER SEGREGATION OF WASTE IS DONE AT SOURCE?	YES	WHETHER ORGANIC WASTE IS BEING RECYCLED?	YES
WHETHER WASTE PAPER IS RECYCLED?	YES	WHETHER SCHOOL IS MAKING EFFORTS TO REDUCE USE OF PAPER BY ADOPTING IT SOLUTIONS?	YES
WHETHER THERE IS PROPER DISPOSAL OF SOLID WASTE?	YES	WHETHER THERE IS A SYSTEM FOR DISPOSAL OF ELECTRONIC WASTE?	NO
WHETHER SCHOOL IS USING ENERGY SAVING AND ENERGY EFFICIENT ELECTRICAL EQUIPMENT?	YES	WHETHER PLANTATION/GARDENING HAS BEEN DONE IN AND AROUND CAMPUS?	YES
WHETHER DRIP IRRIGATION IS THE ONLY MEANS OF WATERING THE GARDEN?	YES	WHETHER SCHOOL IS USING SOLAR ENERGY?	NO
WHETHER WASTE WATER FROM RO PLANT FOR DRINKING WATER IS BEING HARVESTED/RECYCLED?	YES	WHETHER SCHOOL IS PROMOTING AWARENESS AMONGST CHILDREN AND PARENTS ON ENVIRONMENTAL CONSERVATION AND CLEANLINESS?	YES
WHETHER CHILDREN ARE BEING TAUGHT HOW TO AUDIT THE USE OF WATER AND WHETHER THEY ARE BEING ENCOURAGED TO TAKE IT UP AT HOME?	YES	WHETHER CHILDREN ARE TAKING UP WATER AUDITING AT SCHOOL?	YES
WHETHER ENVIRONMENTAL LITERACY IS PROMOTED THROUGH INTEGRATION IN ACADEMICS?	YES	WHETHER TREES HAVE BEEN PLANTED BY STUDENTS, IN SCHOOL AT HOME/IN NEIGHBOURHOOD IN THE CURRENT ACADEMIC YEAR?	YES
WHETHER CONSERVATION OF ENVIRONMENT IS PROMOTED?	YES	TOTAL TREES PLANTED? (BY STUDENTS AND TEACHERS)	23
TOTAL AMOUNT OF WATER CONSERVED (IN LITRES)? (BY STUDENTS AND TEACHERS)	5000	TARGET DATE FOR STOPPING USE OF POLYTHENE	07/01/2022
HAS THE SCHOOL CONSTITUTED YOUTH CLUBS?	NO	WHETHER THE SCHOOL DISASTER RECOVERY MANAGEMENT PLAN DEVELOPED IN SCHOOL OR NOT?	NO
AVAILABILITY OF KITCHEN GARDEN	YES	DO YOU HAVE ECO-CLUB?	NO
HOW MANY ECO-CLUB IN YOUR SCHOOL?		HOW MANY STUDENTS IN YOUR ECO-CLUB?	

8	0	0	0	0	0	0	0	0
---	---	---	---	---	---	---	---	---



**CHAIRMAN/PRESIDENT'S CORRESPONDENT DETAIL AND SMC** 25561-SHOKEEN INTERNATIONAL SCHOLA  
 Date: 14/09/2022

CHAIRMAN/PRESIDENT'S/ CORRESPONDENT NAME	NAVEEN SHOKEEN	CHAIRMAN/PRESIDENT'S/ CORRESPONDENT ADDRESS	B-143, CHANAKA VILLAGE, YAMA STREET-ANEN DELHI-71
CHAIRMAN/PRESIDENT'S/ CORRESPONDENT PHONE (OFFICE)	9210312071	CHAIRMAN/PRESIDENT'S/ CORRESPONDENT PHONE (RESIDENCE)	9210312071
SECRETARY NAME	DEEPAK SHOKEEN	TOTAL MEMBERS	17
WHETHER THE SCHOOL MANAGING COMMITTEE HAS BEEN CONSTITUTED AS PER OF REQUIREMENTS OF AFFILIATION BYE- LAWS?	Yes		



# SCHOOL WEBSITE INFORMATION

25561--SHOKEEN INTERNATIONAL SCHOOL

Dated : 14/09/2022

URL OF SCHOOL WEBSITE	<a href="https://www.shokeeninternationalschool.com">https://www.shokeeninternationalschool.com</a>	DETAILS OF CURRICULUM	Yes
SCHOOL MANAGING COMMITTEE INFORMATION	Yes	TRANSFER CERTIFICATE SAMPLE	Yes
NORMS FOLLOWED FOR FIXING FEE	Yes	SELF AFFIDAVIT OF SCHOOL	Yes
AFFILIATION STATUS (MIDDLE/SECONDARY/SENIOR SECONDARY)	Yes	DETAILS OF INFRASTRUCTURE	Yes
DETAILS OF TEACHERS INCLUDING QUALIFICATIONS	Yes	DETAILS OF TEACHERS TRAINING	Yes
THE NUMBER OF STUDENTS CLASS WISE	Yes	LIST OF BOOKS PRESCRIBED IN VARIOUS CLASSES	Yes
ANNUAL REPORT	Yes	SCHOOL CIRCULARS	Yes
POSTAL ADDRESS AND E-MAIL, TELEPHONE NOS. OF SCHOOL AND AUTHORITIES	Yes	AS PER THE SECTION (2.4.9) OF AFFILIATION BYE-LAWS, INFORMATION WITH REGARD TO FEES CHARGED FOR EACH CLASS	Yes
PERIOD OF AFFILIATION	Yes	ACADEMIC CALENDAR OF THE SCHOOL	Yes
AS PER THE SECTION (2.4.7 (B)) OF AFFILIATION BYE-LAWS, WRITTEN DECLARATION DULY SIGNED BY THE MANAGER AND THE PRINCIPAL TO THE EFFECT THAT THEY HAVE GONE THROUGH THE CONTENTS OF THE BOOKS PRESCRIBED BY THE SCHOOL AND OWN THE RESPONSIBILITY			Yes
ACADEMIC ACHIEVEMENTS; WRITE UP ON ALL EFFORTS MADE IN THE FIELD OF ENVIRONMENT EDUCATION, SPORTS ACHIEVEMENTS, INNOVATIONS, OVERALL RESULTS, PTA ACTIVITIES, IMPORTANT SMC DECISIONS BEEN ADDED IN ANNUAL REPORT OF THE SCHOOL			Yes

**OTHER VITAL INFORMATION**

25561--SHOKEEN INTERNATIONAL SCHOOL

Dated : 13/07/2022

10th BOARD PASS PERCENTAGE (2014/2015/2016)	0/0/0
NAME OF WELLNESS/ACTIVITY TEACHER	YES
CONTACT NUMBER OF GRIEVANCE/COMPLAINT REDRESSAL OFFICER	9312285625
NAME OF HEAD OF SEXUAL HARASSMENT COMMITTEE	KUSUM RATHORE
EMAIL ID OF HEAD OF SEXUAL HARASSMENT COMMITTEE	rathore.kusum@gmail.com
CONTACT NUMBER OF CONTACT PERSON IN CASE OF EMERGENCY	9210312071
TOTAL NUMBER OF DOCTORS IN SCHOOL CLINIC	0
TOTAL NUMBER OF BEDS IN SCHOOL CLINIC	0
DO THE TEACHERS GET PROPER GRADE LIKE PGT/TGT AS PER THE CLASSES THEY ARE ENTITLED TO TEACH?	YES
DOES THE SCHOOL HAVE EPF FACILITY FOR STAFF	YES
MODE OF SALARY PAYMENT	cheque,
ARE THE SCHOOL ACCOUNTS AUDITED REGULARLY?	YES
ACADEMIC SESSION	APRIL TO MARCH



<b>AUDITED BALANCE SHEET OF SCHOOL</b>	<b>VIEW (ViewPdfFiles.aspx? FileName=qCLFSQIA4UKkJtQkzJRq58UK87s52Mn0ruzSjB+VKFqy)nHz0Z16r05YPT2+JnJ'</b>
<b>INCOME AND EXPENDITURE STATEMENT</b>	<b>VIEW (ViewPdfFiles.aspx? FileName=Xx0nALbyAvPLYTjLhXxkVPnIIN87tv+eD3+kaLn20egBLEoYS7RQ2Nolclzho+Wr)</b>
<b>AVAILABILITY OF STAFF WITH KNOWLEDGE OF SOFTWARE/SCANNING/GEO TAGGING/INTERNET?</b>	YES
<b>BEST PRACTICES OF SCHOOL</b>	The school provides the best environment to cater their holistic development.



## OTHER INFORMATION

MANDATORY ART EDUCATION FROM CLASS 1 TO 10 -TWO PERIOD A DAY	YES	WHETHER SELECTION OF TEXTBOOKS NORMS ((SECTION-2.4.7 (A) OF AFFILIATION BYE-LAWS) ( <a href="http://cbseaff.nic.in/cbse_aff/attach-Bye-Laws.pdf">http://cbseaff.nic.in/cbse_aff/attach-Bye-Laws.pdf</a> ))?
WHETHER LIST OF PRESCRIBED BOOKS ARE PUBLISHED ON SCHOOL WEBSITE WITH WRITTEN DECLARATION AS PER (SECTION-2.4.7 (B) OF AFFILIATION BYE-LAWS) ( <a href="http://cbseaff.nic.in/cbse_aff/attachment/onlineservices/affiliation-Bye-Laws.pdf">http://cbseaff.nic.in/cbse_aff/attachment/onlineservices/affiliation-Bye-Laws.pdf</a> )?	YES	WHETHER INFORMATION AS PER PARAGRAPH 2.4.7 (B) OF AFFILIATION BYE-LAWS ( <a href="http://cbseaff.nic.in/cbse_aff/attach-Bye-Laws.pdf">http://cbseaff.nic.in/cbse_aff/attach-Bye-Laws.pdf</a> ) PUBLISHED ON THE SCHOOL WEBSITE?
WHETHER ALL GUIDELINES RELATED TO POCSO ACT COMPLIED WITH AS PER (SECTION-14.25 OF AFFILIATION BYE-LAWS) ( <a href="http://cbseaff.nic.in/cbse_aff/attachment/onlineservices/affiliation-Bye-Laws.pdf">http://cbseaff.nic.in/cbse_aff/attachment/onlineservices/affiliation-Bye-Laws.pdf</a> )?	YES	WHETHER ANNUAL REPORT CONTAIN INFORMATION AS PER PARAGRAPH 14.25 OF AFFILIATION BYE-LAWS ( <a href="http://cbseaff.nic.in/cbse_aff/attach-Bye-Laws.pdf">http://cbseaff.nic.in/cbse_aff/attach-Bye-Laws.pdf</a> )?
WHETHER DISABLED STUDENTS FACILITATED AS PER (SECTION-14.15 OF AFFILIATION BYE-LAWS) ( <a href="http://cbseaff.nic.in/cbse_aff/attachment/onlineservices/affiliation-Bye-Laws.pdf">http://cbseaff.nic.in/cbse_aff/attachment/onlineservices/affiliation-Bye-Laws.pdf</a> )?	YES	WHETHER IN-SERVICE TRAINING ORG INFORMATION AS PER PARAGRAPH 14.15 OF AFFILIATION BYE-LAWS ( <a href="http://cbseaff.nic.in/cbse_aff/attach-Bye-Laws.pdf">http://cbseaff.nic.in/cbse_aff/attach-Bye-Laws.pdf</a> )?
WHETHER ANNUAL HEALTH CHECK-UP OF STUDENTS DONE AND THEIR RECORDS MAINTAINED ?	YES	NUMBER OF TEACHERS IN SCHOOL WHO ARE SHIKSHA VANI

## PEDAGOGICAL PLAN

<b>ADOPTION OF EXPERIENTIAL LEARNING PEDAGOGY -IN WHICH GRADES</b>	I,II,III,IV	<b>WHETHER ANNUAL PEDAGOGICAL PLANS PREPARED, SUBMITTED AND IMPLEMENTATED ?</b>	YES
<b>NUMBER OF TEACHERS TRAINED ON THE ANNUAL THEME OF CBSE - EXPERIMENTAL LEARNING AND INNOVATIVE PEDAGOGY</b>	1		

## FEE STRUCTURE OF SCHOOL

25561--SHOKEEN INTERNATIONAL SCHOOL

<b>CLASS</b>	<b>ADMISSION FEE (in Rupees)</b>	<b>TUITION FEE (in Rupees)</b>	<b>YEARLY DEVELOPMENT CHARGES (in Rupees)</b>	<b>ANNUAL/MONTHLY OTHER CHARGES FOR OTHER FACILITIES (in Rupees)</b>
<b>PRIMARY</b>	100	2500	0	4000
<b>MIDDLE</b>	100	2700	0	4000
<b>SECONDARY</b>	100	3000	0	4000
<b>SENIOR SECONDARY</b>	0	0	0	0



**PHOTO OF SCHOOL**

**SCHOOL PHOTOS**

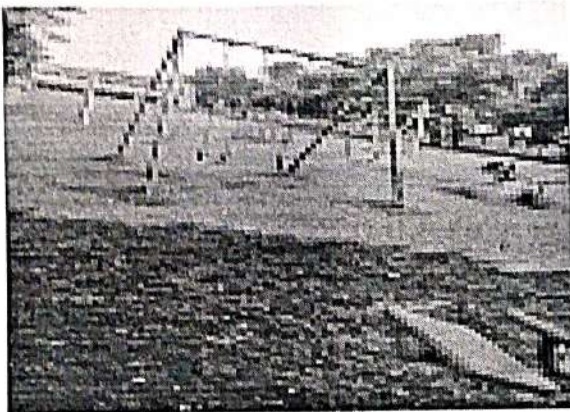
Dated :

**GEO-TAGGED PHOTO**



AD  
U-  
SC

**PLAYGROUND PHOTO**



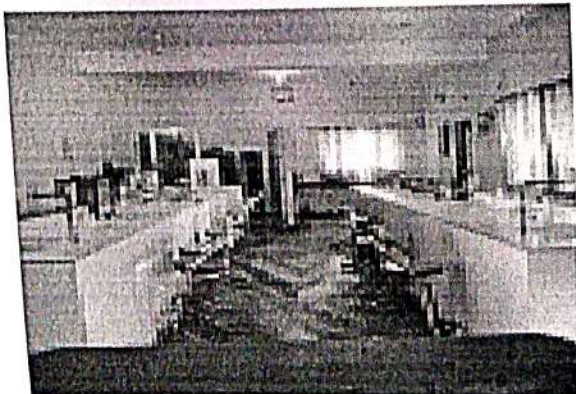
HA  
VIL  
VIL  
PIN  
CLI  
CD

**LIBRARY PHOTO**



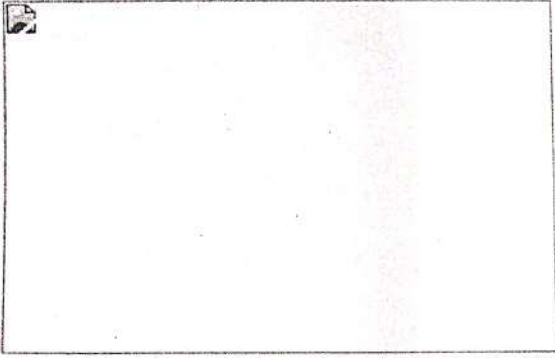
EDI  
ASS  
NUI  
ACA  
MUI  
ISTI

**SCIENCE LAB PHOTO**

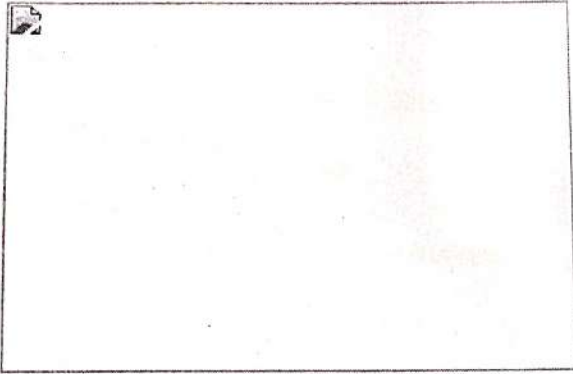


ISTI  
ISTI  
TYPE  
ISTI  
TYPE

**COMPUTER LAB PHOTO**



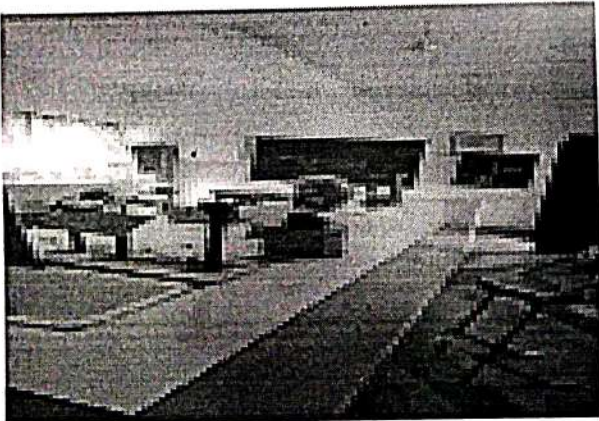
**RAMP PHOTO**



**VIDEO**



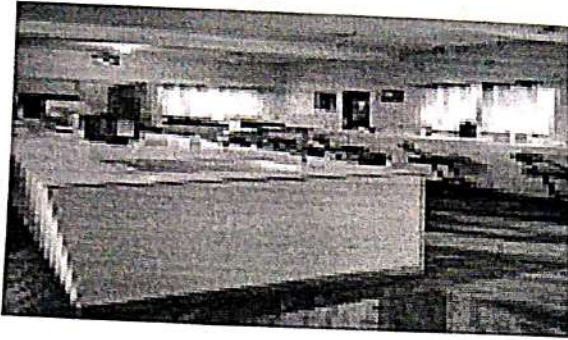
**PHYSICS LAB PHOTO**



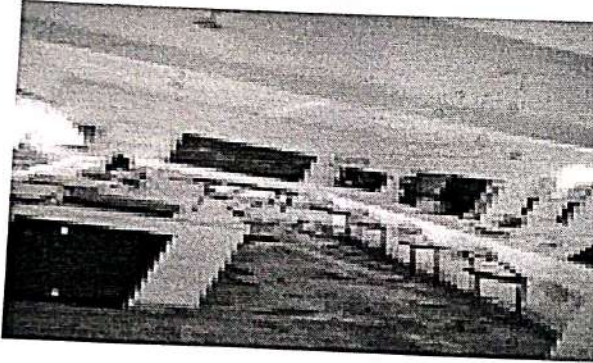
ID, DV  
ired in  
AD, DV  
  
MMIN  
  
WON  
DAY ?  
LOAD, E  
INOF  
IO



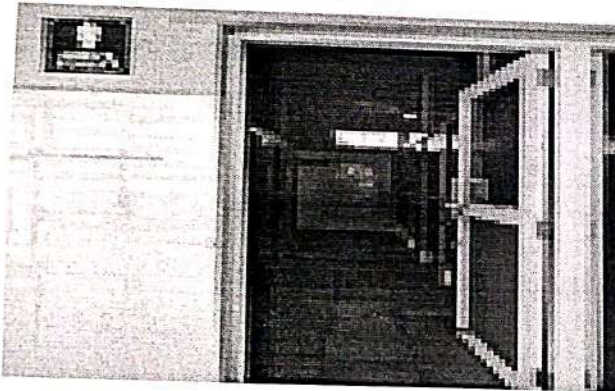
CHEMISTRY LAB PHOTO



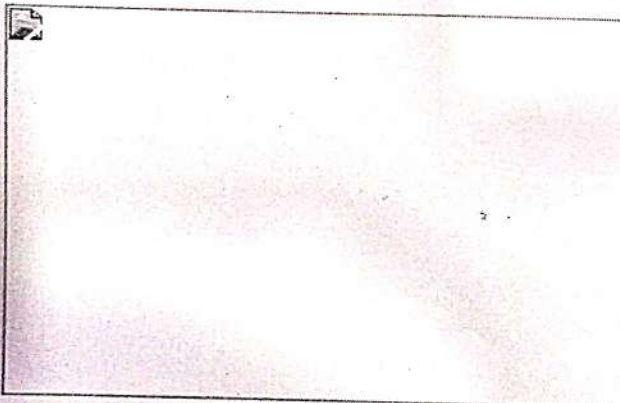
BIOLOGY LAB PHOTO



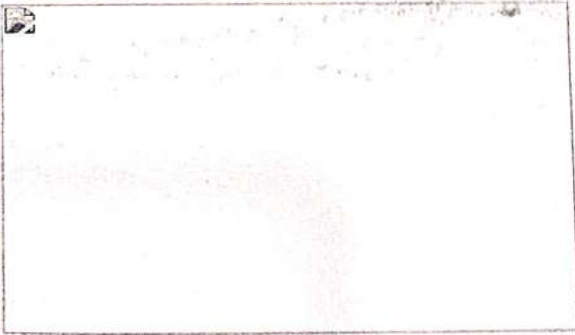
TOILET PHOTO



CWSN TOILET PHOTO



**MATHS LAB PHOTO**



**ADDITIONAL INFORMATION**

25561--CHHAWLA- DWARKA ROAD, DWARKA PHASE-2,  
Dated : 10/05/2023  
07080313308

U-DISE CODE

SCHOOL LOCATED IN RURAL OR URBAN AREA

URBAN

HABITATION NAME/MOHALLA

CHHAWLA

VILLAGE NAME (FOR RURAL)/WARD NUMBER (FOR URBAN)

039-S, CHHAWLA

VILLAGE PANCHAYAT NAME (FOR RURAL)

PIN CODE

110071

CLUSTER RESOURCE CENTER NAME

CHHAWLA

CD BLOCK MANDAL/TALUKA NAME

SOUTH WEST DELHI

EDUCATIONAL ZONE/MANDAL/TALUKA NAME

SOUTH WEST -B ZONE-21

ASSEMBLY CONSTITUENCY

34-Matiala

NUMBER OF VISITS BY BLOCK LEVEL OFFICER DURING LAST  
ACADEMIC YEAR

3

MUNICIPALITY

MCD

IS THIS SCHOOL APPROACHABLE BY ALL WEATHER ROAD

YES

IS THIS A SPECIAL SCHOOL FOR CWSN

NO

IS THIS A SHIFT SCHOOL

NO

IS THIS A RESIDENTIAL SCHOOL

NO

TYPE OF RESIDENTIAL SCHOOL

IS THIS A RELIGIOUS MINORITY SCHOOL

NO

TYPE OF RELIGIOUS MINORITY SCHOOL



WHETHER PLAY MATERIAL GAMES AND SPORTS MATERIAL AVAILABLE FOR EACH GRADE? YES

ARE 1  
STAG NUMBER OF ACADEMIC INSPECTIONS DURING LAST ACADEMIC YEAR 3

NUMI  
COMI NUMBER OF VISITS BY CRC COORDINATOR DURING LAST ACADEMIC YEAR 2

SCHO NUMI SCHOOL PARTICULARS FOR ELEMENTARY SCHOOLS ONLY YES 61--CHHAWLA- DWARKA ROAD, DWARKA PHASE-2, Dated : 10/05/2023

SCHC NUMBER OF INSTRUCTIONAL DAYS DURING LAST ACADEMIC YEAR 223

SCHC SCHOOL HOURS FOR CHILDREN PER DAY (CURRENT YEAR) 6

SCHC SCHOOL HOURS FOR TEACHERS PER DAY (CURRENT YEAR) 6

ARE 5  
DEVE ARE PUPIL CUMULATIVE RECORDS BEING MAINTAINED? YES

IF NO  
DETA ARE PUPIL CUMULATIVE RECORDS SHARED WITH PARENTS? YES

NUMBER OF STUDENTS PROVIDED IN SPECIAL TRAINING (CURRENT YEAR) 13

NUMBER OF STUDENTS ENROLLED IN SPECIAL TRAINING (PREVIOUS YEAR) 0

NUMBER OF STUDENTS COMPLETED SPECIAL TRAINING (PREVIOUS YEAR) 0

HAS SCHOOL MANAGEMENT COMMITTEE (SMC) BEEN CONSTITUTED? YES

LANGUAGES TAUGHT AT PRIMARY STAGE: MENTION THE NAME OF LANGUAGE OPTIONAL ENGLISH HINDI

IS ANGANWADI CENTRE IN OR ADJACENT TO SCHOOL? OPTIONAL YES

NUMBER OF GIRLS RECEIVED SELF DEFENCE TRAINING 0

TOTAL NUMBER OF GIFTED CHILDREN IDENTIFIED IN SCHOOL 0

NUMBER OF MEETINGS HELD BY SMC DURING LAST ACADEMIC YEAR 2

WHETHER SMC PREPARE THE SCHOOL DEVELOPMENT PLAN YES

WHETHER SEPARATE BANK ACCOUNT FOR SMC NO IF YES, PROVIDE THESE DETAILS

BANK NAME

ACCOUNT HOLDER'S NAME

BANK ACCOUNT NUMBER

IFSC CODE

WHEN WAS THE TEXTBOOK RECEIVED FOR CURRENT YEAR? NOT RECEIVED

WHETHER COMPLETE SET OF FREE TEXT BOOKS FOR TEACHERS LEARNING EQUIPMENT (TLE) RECEIVED? NO

WHETHER TLE RECEIVED FOR EACH GRADE? NO

WHETHER PLAY MATERIAL GAMES AND SPORTS MATERIAL AVAILABLE FOR EACH GRADE? YES

ARE THE MAJORITY OF PUPILS TAUGHT THROUGH THEIR MOTHER TONGUE AT PRIMARY STAGE? OPTIONAL YES

NUMBER OF STUDENTS APPEARED IN STATE-LEVEL COMPETITION/OLYMPIADS/NATIONAL LEVEL COMPETITION 0

**SCHOOL PARTICULARS FOR SECONDARY AND HIGHER SECONDARY SCHOOLS ONLY** Dated: 10/05/2023

NUMBER OF INSTRUCTIONAL DAYS DURING LAST ACADEMIC YEAR 0

SCHOOL HOURS FOR CHILDREN PER DAY (CURRENT YEAR) 6

SCHOOL HOURS FOR TEACHERS PER DAY (CURRENT YEAR) 6

ARE SCHOOL MANAGEMENT COMMITTEE (SMC) AND SCHOOL MANAGEMENT DEVELOPMENT COMMITTEE (SMDC) SAME? YES

IF NO, UPLOAD VIEW (ViewPdfFiles.aspx? FileName=mZhS5YH3Dwz3eZfdqfbCe+1hhWMnAFMaShlhHedyn0YgCctfJG2fZ4mutdkr8kW) DETAILS OF SMDC

**PHYSICAL FACILITIES AND EQUIPMENTS**

25561--CHHAWLA- DWARKA ROAD, DWARKA PHASE-2,

NUMBER OF CLASSROOMS BY CONDITION

Dated: 13/07/2022

PUCCA	PARTIALLY PUCCA	KUCHCHA	TENT
11			

IS LAND AVAILABLE FOR EXPANSION OF SCHOOL ACTIVITIES? YES

IS SEPARATE ROOM AVAILABLE FOR PRINCIPAL/HEAD TEACHER? YES

IS SEPARATE ROOM AVAILABLE FOR VICE PRINCIPAL/ASSISTANT HEAD TEACHER? YES

IS SEPARATE ROOM AVAILABLE FOR CRAFTS/CO CURRICULAR ACTIVITIES? YES

IS STAFF QUARTERS AVAILABLE? NO

IS HAND WASHING FACILITY AVAILABLE NEAR TOILET/URINALS ? YES

IS ELECTRICITY CONNECTION AVAILABLE? YES

IS AUDIO/VISUAL/PUBLIC ADDRESS SYSTEM AVAILABLE? NO

IS LCD PROJECTOR AVAILABLE? YES

NUMBER OF AVAILABLE PRINTERS 3

SPEED OF AVAILABLE PRINTERS 20-40 PPM









9	0	0	0	0	0	0	0	0
10	0	0	0	0	0	0	0	0
11	0	0	0	0	0	0	0	0
12	0	0	0	0	0	0	0	0

**MID DAY MEAL INFORMATION** (Only for Government and Aided Schools) **25561--CHHAWLA- DWARKA ROAD, DWARKA PHASE-2,**

Dated : 13/07/2022

<b>STATUS OF KITCHEN SHED</b> (If meal prepared in school)	NOT AVAILABLE	<b>SOURCE OF MDM</b> (If meal not prepared in school)	OTHERS
--	---------------	---	--------

**SPORTS INFORMATION**

25561--CHHAWLA- DWARKA ROAD, DWARKA PHASE-2,

Dated : 13/07/2022

<input type="checkbox"/> AEROBICS	<input checked="" type="checkbox"/> ATHLETICS	<input type="checkbox"/> BASKETBALL	<input checked="" type="checkbox"/> CHESS	<input checked="" type="checkbox"/> FOOTBALL	<input type="checkbox"/> HANDBALL	<input checked="" type="checkbox"/> JUDO	<input checked="" type="checkbox"/> KHO KHO	<input type="checkbox"/> SWIMMING	<input type="checkbox"/> TABLE TENNIS	<input checked="" type="checkbox"/> VOLLEYI
<input type="checkbox"/> ARCHERY	<input checked="" type="checkbox"/> BADMINTON	<input type="checkbox"/> BOXING	<input checked="" type="checkbox"/> CRICKET	<input type="checkbox"/> GYMNASTICS	<input type="checkbox"/> HOCKEY	<input checked="" type="checkbox"/> KABADDI	<input type="checkbox"/> SHOOTING	<input checked="" type="checkbox"/> TAEKWONDO	<input type="checkbox"/> TENNIS	<input checked="" type="checkbox"/> YOC

DOES THE SCHOOL HAVE A MANDATORY SPORTS/GAMES PERIOD FROM CLASS 1 TO 12 EVERY DAY ? YES

**FACILITY INFORMATION**

25561--CHHAWLA- DWARKA ROAD, DWARKA PHASE-2,

Dated : 13/07/2022

**FACILITY PROVIDED TO PRIMARY STUDENTS**

FACILITY	GENERAL	SC	ST	OBC	MUSLIM MINORITY
FREE TEXT BOOKS	1	1	0	3	0
FREE UNIFORMS	1	1	0	3	0
STATE DEFINED INCENTIVES	0	0	0	0	0

**FACILITY PROVIDED TO UPPER PRIMARY STUDENTS**

FACILITY	GENERAL	SC	ST	OBC	MUSLIM MINORITY
FREE TEXT BOOKS	1	2	0	3	0
FREE UNIFORMS	1	2	0	3	0
STATE DEFINED INCENTIVES	0	0	0	0	0

**FACILITY PROVIDED TO CWSN STUDENTS**

FACILITY	ELEMENTARY	SECONDARY	HIGHER SECONDARY
----------	------------	-----------	------------------

BRAILL BOOKS/KITS	0	0	0
LOW VISION KIT	0	0	0
BRACES	0	0	0
CRUTCHES	0	0	0
WHEEL CHAIRS	0	0	0
CALIPERS	0	0	0
TRI CYCLES	0	0	0

Copyright © 2018 CBSE (login.aspx). All rights reserved.